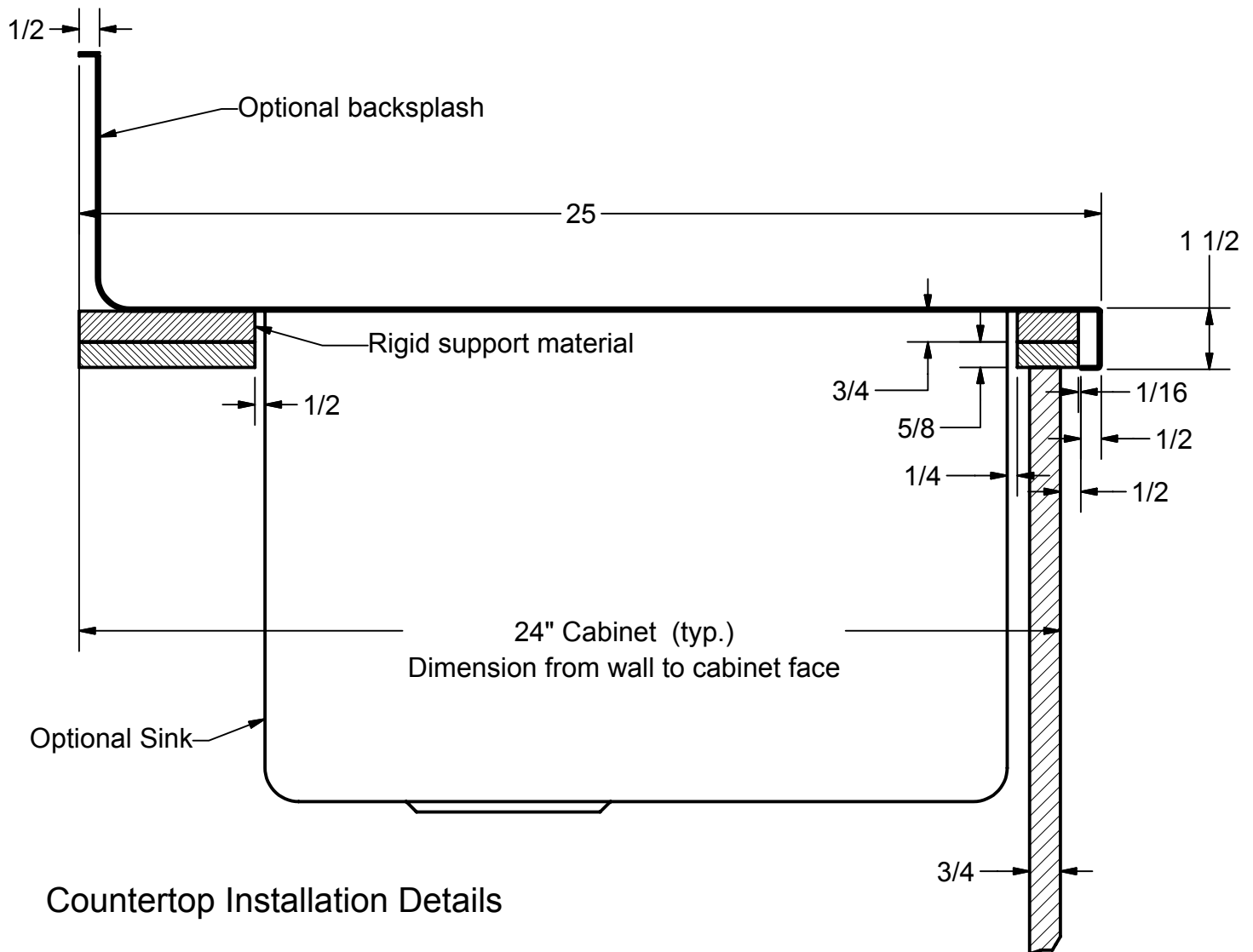


# Channel Edge Counter Top Installation Tips



## Countertop Installation Details

Rigid support is required under metal countertops. This support can be an existing counter top that has been properly prepared, or new plywood. The thickness of the support material should be at least 1/8" less than the height of the front edge of your counter top to ensure the support material will not be visible after the metal counter top is installed. We recommend that the support materials be field installed.

The metal top must be secured to the support material below by construction adhesive or mastic. Set the metal top in place for a dry run, and then remove. Apply the adhesive and immediately set the counter top back in place. Press down to ensure adhesion and then set heavy weights on the top until the adhesive is dry, usually about 24 hours. Examples of weights our customers have reported using: boxes of books, a case of wine, bags of potting soil, jugs of water.

We can install plywood for you at our shop if you prefer.



Handcrafted Metal, Inc. Copyright 2003 All Rights Reserved.